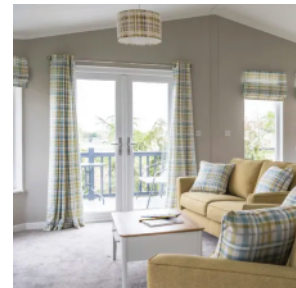




WESTFIELD - LUXURY LODGE

The affordable Westfield has been a popular choice with leisure parks for many years and it's easy to see why!



The distinctive exterior, clad in CanExel (available in a range of colours and claddings), retains the popular design features of its predecessor and benefits from tall slender windows to the living space and angled windows and French doors to the front.

The contemporary open-plan lounge, dining and kitchen area is light and spacious and a beautiful new colour scheme of soothing earthy tones creates a wonderful relaxed feel.

The Westfield features a large dining area with extending dining table, perfectly positioned to take in a view.

Behind this, a fully fitted, galley-style kitchen includes a full array of integrated appliances.

The spacious lounge area provides plenty of room to sit back and relax and includes a contemporary electric fire, practical boot seat, additional storage and coat hooks next to the side door.

Fitted bedrooms in soft tones come with coordinated soft furnishings and the master bedroom comes not only with a stylish en-suite shower room but with a large walk-in-wardrobe.

Options

Dec 2022

SIZES
36' x 20', 45' x 20'

BEDS
2DB, 3DB, 4DB

BATHS
1, 2

DESCRIPTION
Bathroom, Bathroom & en-suite shower

MINIMUM SIZE
36' x 20'

MAXIMUM SIZE
65' x 22'

SKU / MODEL
RCL005

A place to relax...





WESTFIELD - LUXURY LODGE

Construction

Built to BS 3632 residential standard
Protected by a 10-year GoldShield structural warranty
Split, pitched, tiled roof (roof tiles guaranteed for 40 years)
PVCu double glazing (10-year frame warranty + 5-year glazing warranty)
CanExel, Ced'R-Vue cladding (other colours and claddings available)
Feature glazing and French doors to angled front elevation
Large full-height picture windows
White panelled ceilings throughout

Lounge and dining areas

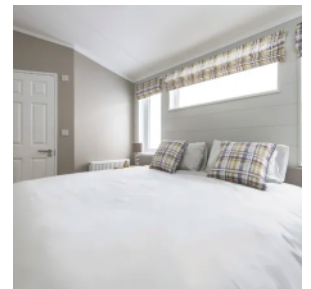
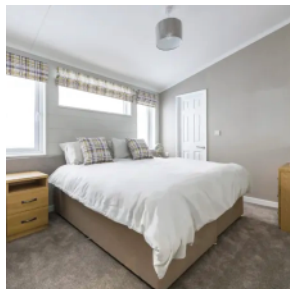
Two three-seater Adnams-style sofas with coordinating scatter cushions
Contemporary TV unit, two coffee tables and extending dining table with chairs
Hessian backed carpet with underlay
Coat cupboard with hooks to the main entrance
Full-length fully lined curtains
Inset LED down-lights

Kitchen

Integrated appliances including a fridge-freezer, washer/dryer and dishwasher
Single electric oven and 5-burner hob with extractor
Kitchen island / breakfast bar with stools
Vinyl flooring
Venetian blind
USB charging point

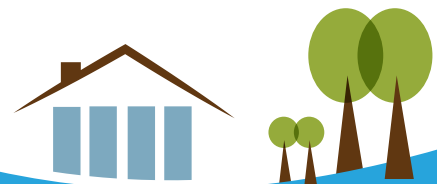
Bedrooms and bathrooms

Feature clad wall with inset downlights to master bedroom
Fitted wardrobes and floating bedside shelves
Beds with coordinated headboards and scatter cushions
Fully lined curtains
Full-height bevelled edge mirrors to the bedrooms
Hessian backed carpet with underlay to the bedrooms and vinyl to the bathroom and en-suite
Large combi shower to the en-suite and a shower-over-bath to the bathroom
Contemporary vanity units with wall-mounted basins
Venetian blinds



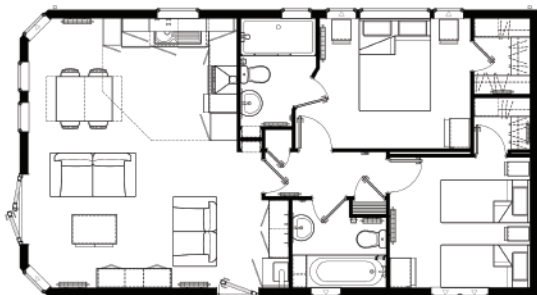
SEE OUR WEBSITE FOR MORE
PHOTOS AND INFORMATION

A place to relax...

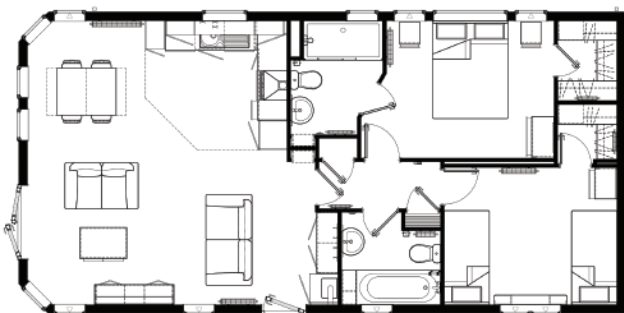




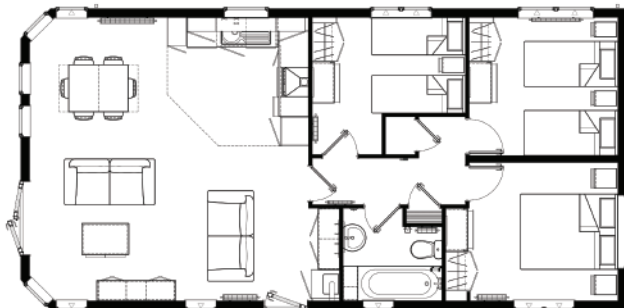
WESTFIELD - LUXURY LODGE



36' x 20'
2DB



40' x 20'
2DB



40' x 20'
3DB



45' x 20'
4DB

A place to relax...

